

# Transform Your Enterprise with Fully Integrated Informatics

Bring tailored user experiences to stakeholders  
across the organization with Fujifilm's AI-enabled  
Synapse® Enterprise Imaging portfolio

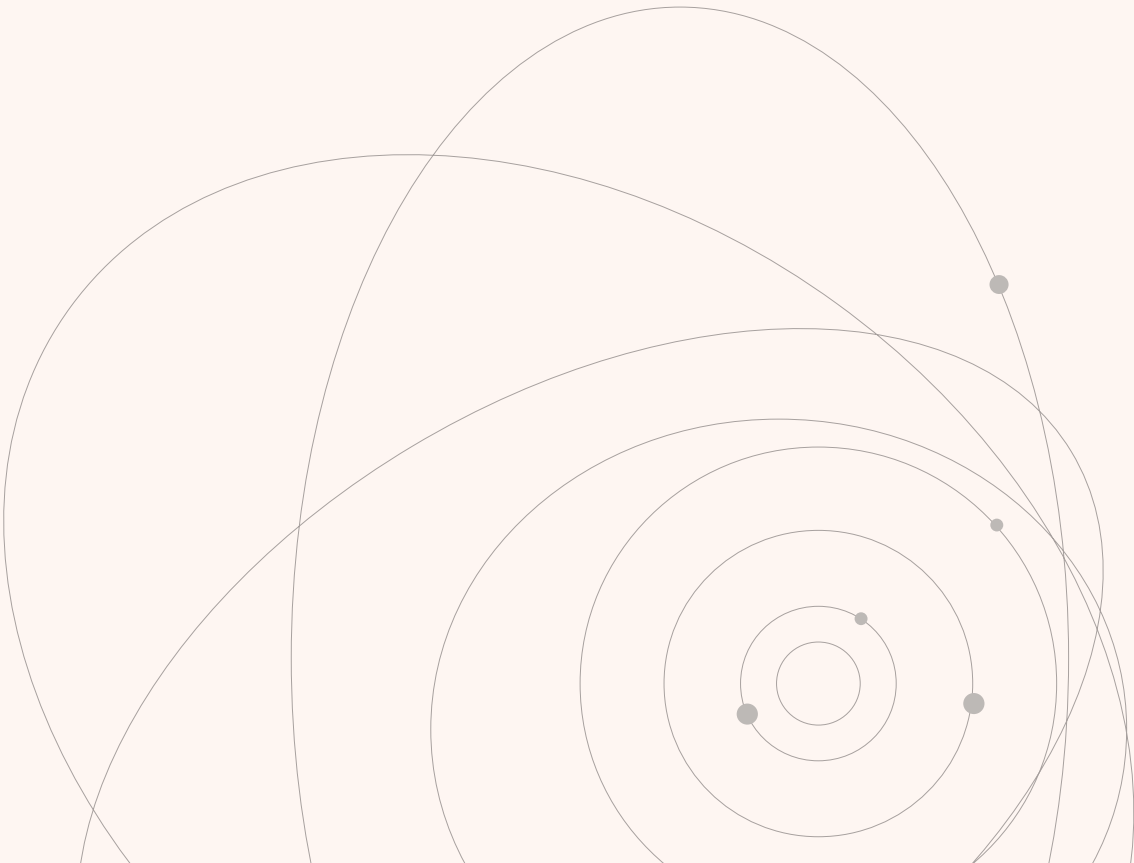
---

**SYNAPSE**®  
Enterprise Imaging

# Seamless information sharing for intelligent, proactive care

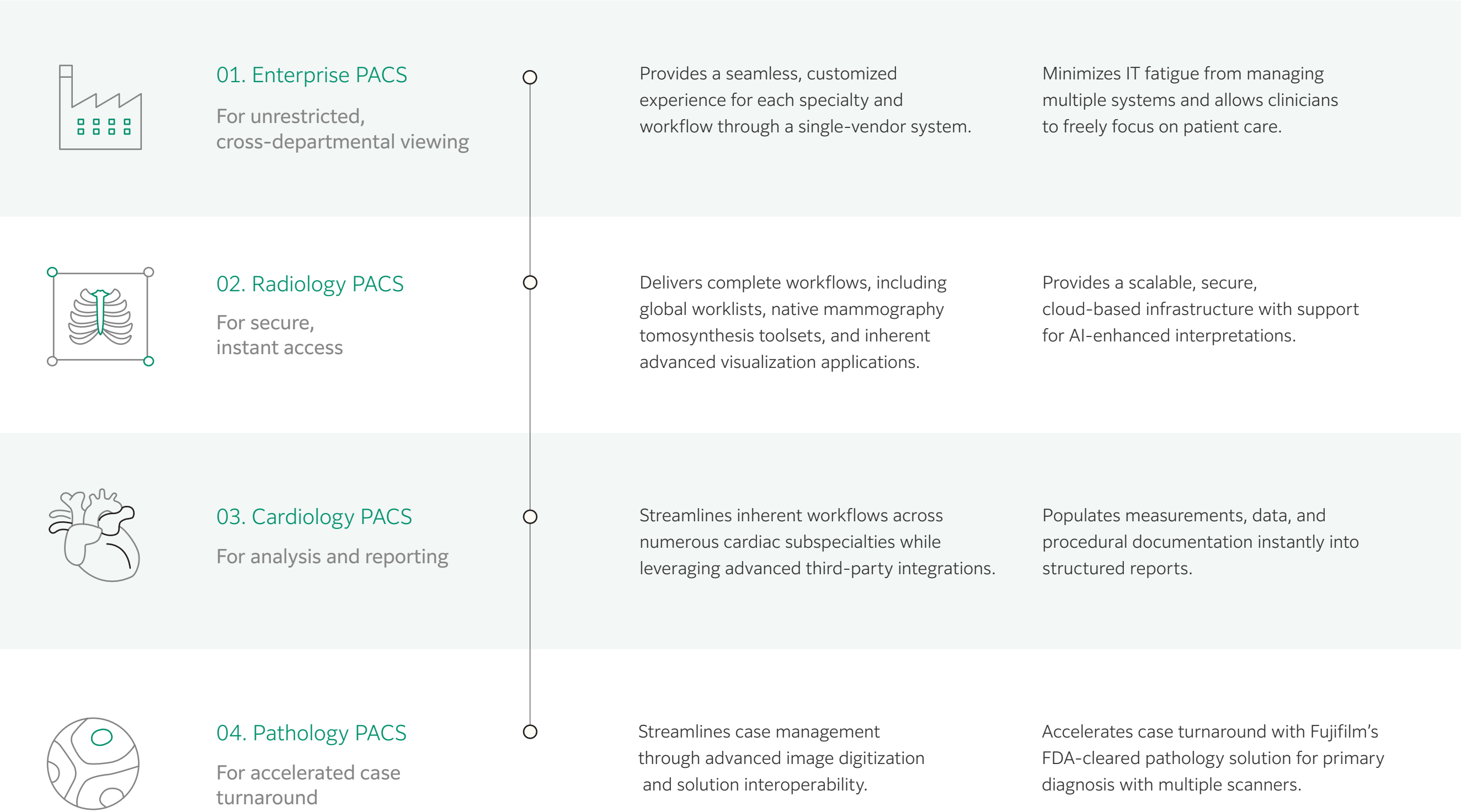


Fujifilm understands the biggest enterprise imaging challenges physicians and healthcare organizations face because we are a longstanding and trusted partner. We eliminate the need for multiple vendors and enable you to streamline processes across imaging and reporting disciplines, increase overall efficiency for clinical staff, and provide optimal patient care.





# Our Solutions



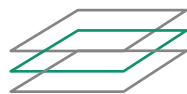
# Our Solutions



05. Vendor  
Neutral Archive  
For true image  
interoperability

Securely captures, stores, and manages all clinical imaging systems and content via a cloud-based architecture.

Provides interoperability across enterprise departments to create a complete picture of patient health.



06. Mobility  
Enterprise Viewer  
For anytime,  
anywhere access

Securely connects enterprise imaging archives to deliver a single patient view across all departments, from any device at any location.

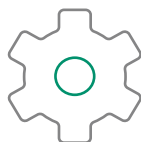
Includes a powerful and comprehensive visualization toolkit that displays clinical imaging in its native file format.



07. Cloud Services  
For data security

Features a scalable, security-first focus to support the full Synapse Enterprise Imaging portfolio.

Provides cost-effective hosting and management offering through Fujifilm's experienced cloud delivery team.



08. Enterprise  
Information Systems  
For comprehensive  
workflows

Enhances patient engagement with proactive appointment scheduling, pre-service tools, upfront cost transparency, and imaging result notifications.

Simplify care coordination through a robust referrer portal, unified patient record, and easy order entry.

# Our Solutions



09. Artificial Intelligence Orchestrator  
For scalable AI adoption

Supports AI innovations and advancing algorithms with an open platform that enhances AI data security, optimizes infrastructure, and reduces underlying costs.

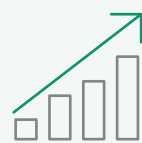
Prioritizes studies based on findings with automated report population and notifications to care teams regarding critical results.



10. 3D  
For advanced visualization access

Performs advanced image analyses within Synapse PACS to aid with interpretation, reporting, and treatment planning.

Allows exam state sharing across the enterprise for effective cross-departmental collaboration.



11. Analytics  
For driving future growth

Provides clinical and administration staff current and predictive views of business operations through a cloud-based data mining and extraction engine.

Analyzes trends in procedure volume, patient population, lab operation efficiency, profitability, diagnostic accuracy, and more.

01 —



# Enterprise PACS



Cross-departmental system engineered for the enterprise

Fujifilm’s version 7x Enterprise PACS provides clinicians with unrestricted cross-departmental image access, designated tool sets, advanced visualization applications, and AI-driven workflows through one unified, cloud-enabled diagnostic viewer, while simultaneously alleviating IT resource constraints and overhead.

## Unified viewing

Display radiology, mammography, cardiology, pathology, and specialty department data on one diagnostic viewer.

## Secure hosting and storage

Host all content in the cloud or on-premises; securely store all DICOM and non-DICOM data in Fujifilm’s award-winning vendor-neutral archive (VNA).

## Analyzing and optimizing

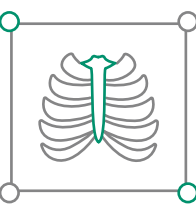
Identify and analyze current and predictive trends across the entire organization to optimize business operations.

## Streamlined architecture

Eliminate the need for multiple vendors and reduce IT fatigue from managing competing tech priorities through a unified, single-vendor system.

02 —

# Radiology PACS



A new standard for enterprise image management

Each day, physicians across your organization encounter massive amounts of medical imaging data—data that is often siloed between specialty areas, workstations, and applications. Forged from Fujifilm’s legacy of innovation, Synapse Radiology PACS breaks down these traditional barriers and promotes the free and secure flow of information across your technologies and teams.

## On-demand access

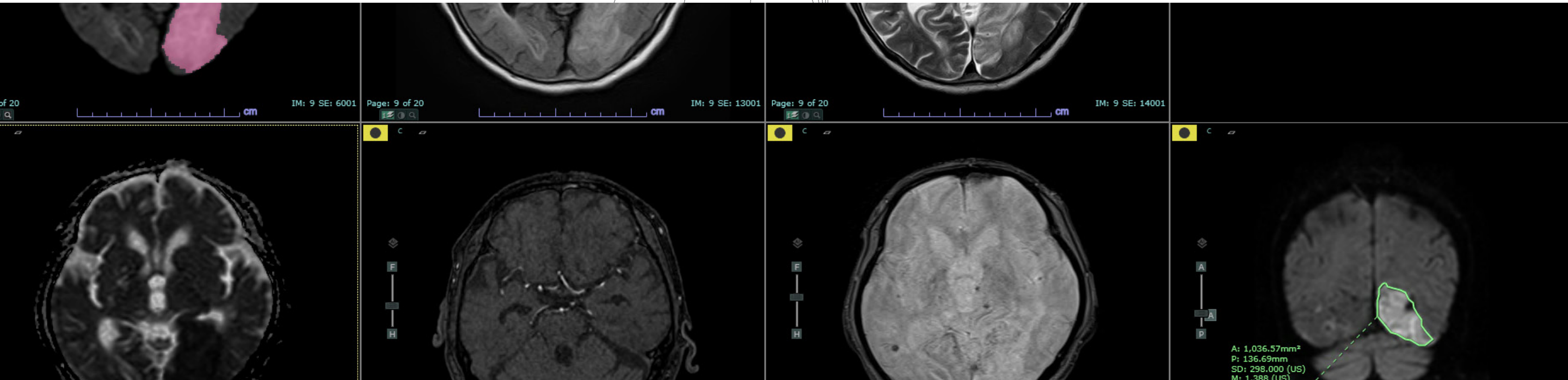
Radiologists can instantly view and interact with each patient’s current and historical radiology, cardiology, pathology, and specialty department data in the zero-download, browser-flexible diagnostic viewer—helping to improve clinical accuracy, enhance efficiency, and streamline workflows.

## All your data. All in one place.

Traditionally, PACS has been designed to manage radiology DICOM data. Synapse PACS advances patient care by also displaying cardiology DICOM data along with non-DICOM imaging information from specialty departments, unifying all enterprise imaging in a single diagnostic viewer, optimizing workflows, and enhancing efficiencies inside and outside of your facility.

## Secure and compliant

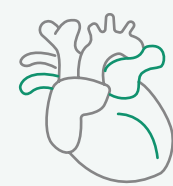
Synapse PACS server-side, cloud-enabled design eliminates the need to download software to display images and keeps sensitive patient information safe—making it HIPAA-compliant. It has also been consistently granted Authority to Operate on networks in the U.S. Department of Defense—a distinction awarded every 5 years.





03 —

# Cardiology PACS



A comprehensive approach to cardiac care

Collaborative cardiac care happens when cardiologists and physicians across subspecialties can instantly access the latest patient data, clinical statements, and report histories and communicate over shared exam states with their colleagues. Synapse Cardiology PACS ensures the right people are weighing in on every decision.



## Cardiac catheterization

Prepopulated diagrams and procedural data enable cardiac catheterization specialists to quickly create detailed reports.

## ECG management

Easy-to-use tools with side-by-side comparison enable ECG interpretation and confirmation.

## Echocardiography

Report creation efficiency is improved by utilizing auto-summary, one-click normal, and macros to generate study findings.

## Nuclear cardiology

Quantification and review features provide nuclear cardiologists with access to generate reports from any location.

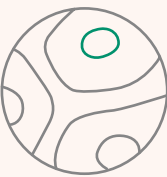
## Noninvasive vascular

Complex vascular anatomy and pathology is documented with interactive diagrams.



04 —

# Pathology PACS



Enhance pathology diagnoses, case access, and collaboration

Accelerate your digital workflow transformation with Synapse Pathology, Fujifilm’s PACS solution that is FDA-cleared for primary diagnosis with multiple scanners. Streamline case management through proprietary advances in image digitization and solution interoperability to accelerate pathology-report turnaround with an open architecture that supports scanner, LIS, and AI integrations.



## Smarter workflows

Embrace a better workflow not possible with the use of glass slides. Experience simpler communication, seamless telepathology, and enhanced collaboration.

## No more bottlenecks

Seamlessly add and remove AI applications directly to and from your workflow without the need to learn new software. Send results anywhere.

## Intelligent management for IT

Employ a holistic approach to address IT needs using intelligent IT management tools for image lifecycle management, file size optimization, automated data archiving, and Rapid File streaming.

## Vulnerability protection

Secure protected health information (PHI) and safeguard against data loss and breaches with information hosted in secure data centers, managed by a dedicated team of IT and Fujifilm certified professionals.

## Unparalleled installation experience

Leverage decades of experience and knowledge with Fujifilm’s extensive track record of installation success in North America and globally.

05 —

# VNA



See the full patient picture

In this industry, every second counts. Consider the possibilities if physicians throughout your enterprise had unfettered access to the right information at the right time. Imagine if the context needed to make informed diagnoses and decisions was only a click away. You can realize this potential with Synapse VNA, which enables improved patient care by connecting imaging content across the entire care continuum.

## Encounters-based workflows

The process of capturing content during the patient-provider encounter is automated—linking with metadata, uploading to the electronic health record (EHR), and providing seamless access to those who need it.

## True interoperability across your enterprise

The core of the Synapse Enterprise Imaging portfolio is VNA-inherent workflow tools that integrate all your imaging systems, inside and outside of your organization, and manage clinical imaging content (DICOM and non-DICOM) across specialty areas.

## A single, patient-centric view

By eliminating the traditional silos that prevent technologies and teams from working together, physicians are presented with a complete imaging record and equipped with the information they need to treat the whole patient.

## Connected care

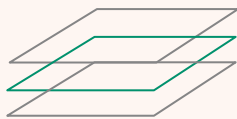
VNA seamlessly coordinates multiple patient IDs, populates a centralized Master Patient Index, and simplifies the sharing of all enterprise imaging content between PACS, facilities, departments, and teams.







# Mobility Enterprise Viewer



Enable anytime,  
anywhere access

Unfettered access and  
stringent security

Designed with enterprise  
architecture in mind

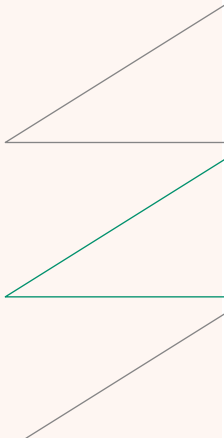
Holistic patient imaging  
record collaboration

Providing best-in-class care is a continuous, 24/7 undertaking. To meet that need, your clinicians need instant access to complete imaging records and reports that span all departments and site locations from anywhere, on any device, and at anytime.

Through adherence to the most stringent security standards, your physicians can safely access the same diagnostic-grade images from their phone, tablet, and computer and share with colleagues and patients—anytime, anywhere.

A federated data search across all archives is supported and imaging data is displayed as it was stored in its native format. This includes a wide range of non-DICOM image and video formats, including JPG, PNG, TIFF, MP4, PDF, and AVI.

The share feature allows users from different departments and teams to share studies with other enterprise solutions and collaborate via voice and video to support the complete patient record.



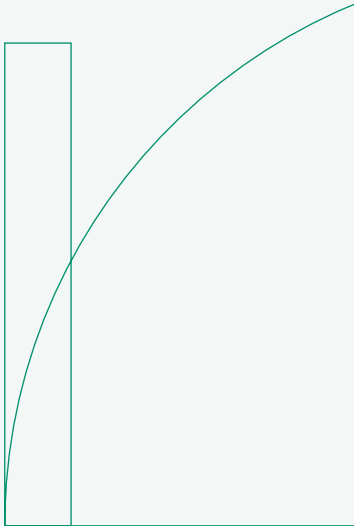




# Cloud Services

An experienced and trusted cloud partner

Synapse Cloud Services features a scalable, security-first focus to collaboratively support the full Synapse Enterprise Imaging portfolio in today’s hyperscale age.



## Space for the whole family

Hosting is available for the full suite of Synapse products, with system patching, upgrades, backups, and other IT tasks managed by Fujifilm subject matter experts.

## Resilient architecture

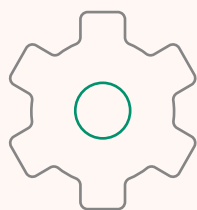
Disaster recovery and business continuance services ensure your critical data remains safe and available at all times, so your physicians can collaborate from anywhere without compromising the security of your network.

## Cloud backup and recovery

Healthcare organizations are increasingly under fire from hackers and cyber criminals trying to get their hands on sensitive information. Secure, automatic backups protect your data against cyber threats, natural disasters, system failures, and human error.



# Enterprise Information Systems



Improve productivity and increase profitability

From scheduling and registering patients to notifying them when results are ready for review, healthcare organizations handle a wide range of business administration tasks every day. Synapse Enterprise Information System (EIS) provides comprehensive workflow management that extends beyond radiology to support efficiency and enhance care across all departments and facilities.

## More effective patient engagement

Synapse EIS features intuitive patient engagement tools that enable self-scheduling, send automated appointment reminders, and offer self-check-in with digital forms and signatures.

## Empowerment for referring physicians

A robust user interface supports inherent access to report images, real-time messaging with the facility, customized scheduling settings, and easy online request capabilities.

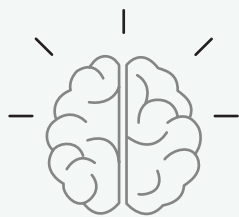
## Boosting the bottom line

With automated eligibility and estimation of charges, including insurance and ID verification, your facility can prioritize care, gauge propensity to pay, and reduce denials. This expedites operational tasks related to coding, billing, and claims processing.



09 —

# Artificial Intelligence Orchestrator



Scalable AI adoption across the enterprise

In the rapidly evolving healthcare environment, you need a solution that can help you improve care outcomes today and prepare for the challenges of tomorrow. Fujifilm’s Synapse AI-enabled Orchestrator helps transform workflows that empower your organization to reach its full potential through unlimited collaboration.

## Always innovating

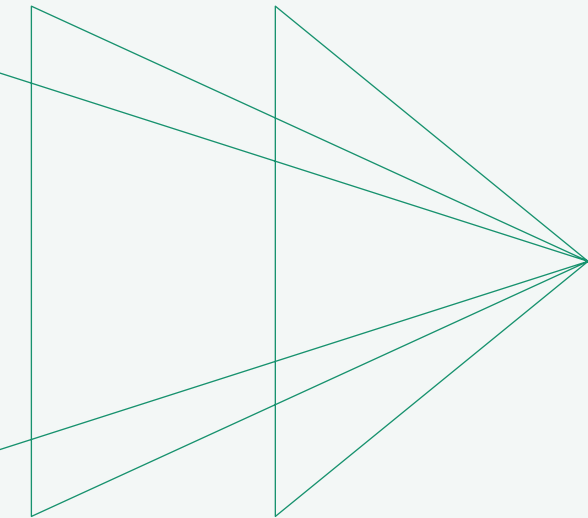
With physicians and patients in mind, we are always advancing our solutions as new challenges arise, merging various AI technologies with our image processing and pushing healthcare to new heights.

## Ready for partnerships

Our orchestrator is prepared for a wide range of AI algorithms, developed through partner vendors and academic research partners, to provide a dynamic enterprise imaging experience.

## Scalable AI adoption

Enterprise-wide AI adoption requires a scalable solution. Consolidate your AI integrations through one application to enable true AI interoperability across all clinical workstations.







Improving the way images are seen and shared can help your radiologists and cardiologists, as well as other specialists, to quickly and accurately deliver exceptional patient care. Synapse 3D features a sophisticated design, with Fujifilm’s advanced image recognition technology and nearly 60 applications that span multiple specialty areas.

Comprehensive and cutting-edge

An intuitive user interface, a host of new applications, and seamless integration within Synapse PACS makes the latest version of Synapse 3D the most robust version yet.

Interoperable for efficient, holistic care

Clinicians can drag and drop snapshots into the PACS Viewer, save workflow states, and share them among other users in the enterprise—streamlining workflows and saving valuable time.

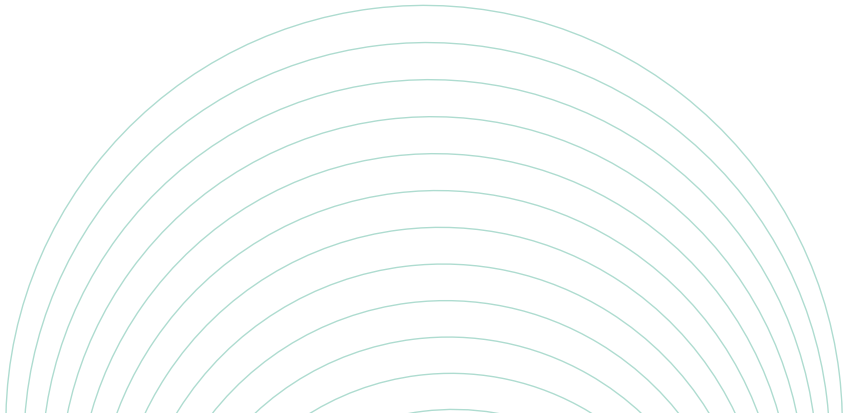
Designed to support today’s complex workflows

Applications are developed in collaboration with radiologists, cardiologists, surgeons, and other specialists to aid medical professionals across your organization with interpretation, reporting, and surgical treatment planning.



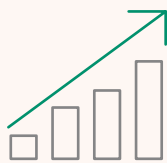
3D

Advanced visualization software and tools, designed with specialists in mind





# Analytics



Identify inefficiencies and future growth opportunities

Synapse Analytics is a data mining and extraction solution that enables your clinical, administrative, and executive staff to identify and analyze the business data they need to see current and predictive views of business operations. Configurable for cloud or local storage, this secure and customizable technology provides unprecedented insight and tracking for trends in procedure volume, patient population analysis, lab operation efficiency, profitability, diagnostic accuracy, and more.

## Data-driven insights

Turn fragmented data into positive outcomes by breaking down system and facility silos and aggregating disparate data into a single cloud-based or local instance.

## More effective clinical data usage

Identify trends that lead to better-quality care and higher patient satisfaction. Simplify searches to locate patients who meet specific therapeutic- and pharmacologic-intervention criteria as well as target data for AI and machine learning research.

## Reduced administration overhead

Save valuable time and resources by reducing the time and effort staff members spend on maintaining healthcare accreditation.

## Optimized lab performance

Operationalize analytics to deliver the actionable data that is critical in helping providers decrease or, in some cases, eliminate treatment delays.

## Investment opportunities uncovered

Track procedural volumes and variances across sites, providers, and staff to find opportunities for new investments in software, hardware, and modalities to address operational pinch points.



Fujifilm understands the biggest enterprise imaging challenges physicians and healthcare organizations face because we are a longstanding and trusted partner.

In 1936, we launched our healthcare business with X-ray film, and we haven't stopped innovating since.



For nearly 90 years, we've continued to transform ourselves so we can help healthcare organizations like yours make the world a healthier place. As the industry advances, we'll continue adapting—finding new ways to apply our unique technologies to solve preeminent healthcare challenges.

We'll never stop iterating and developing digital solutions that progress radiography, endoscopy, ultrasound systems, healthcare IT, pharmaceuticals, and regenerative medicine—and the Synapse® Enterprise Imaging portfolio represents this commitment to continuous innovation.

For more information, visit [ei.fujimed.com](https://ei.fujimed.com).