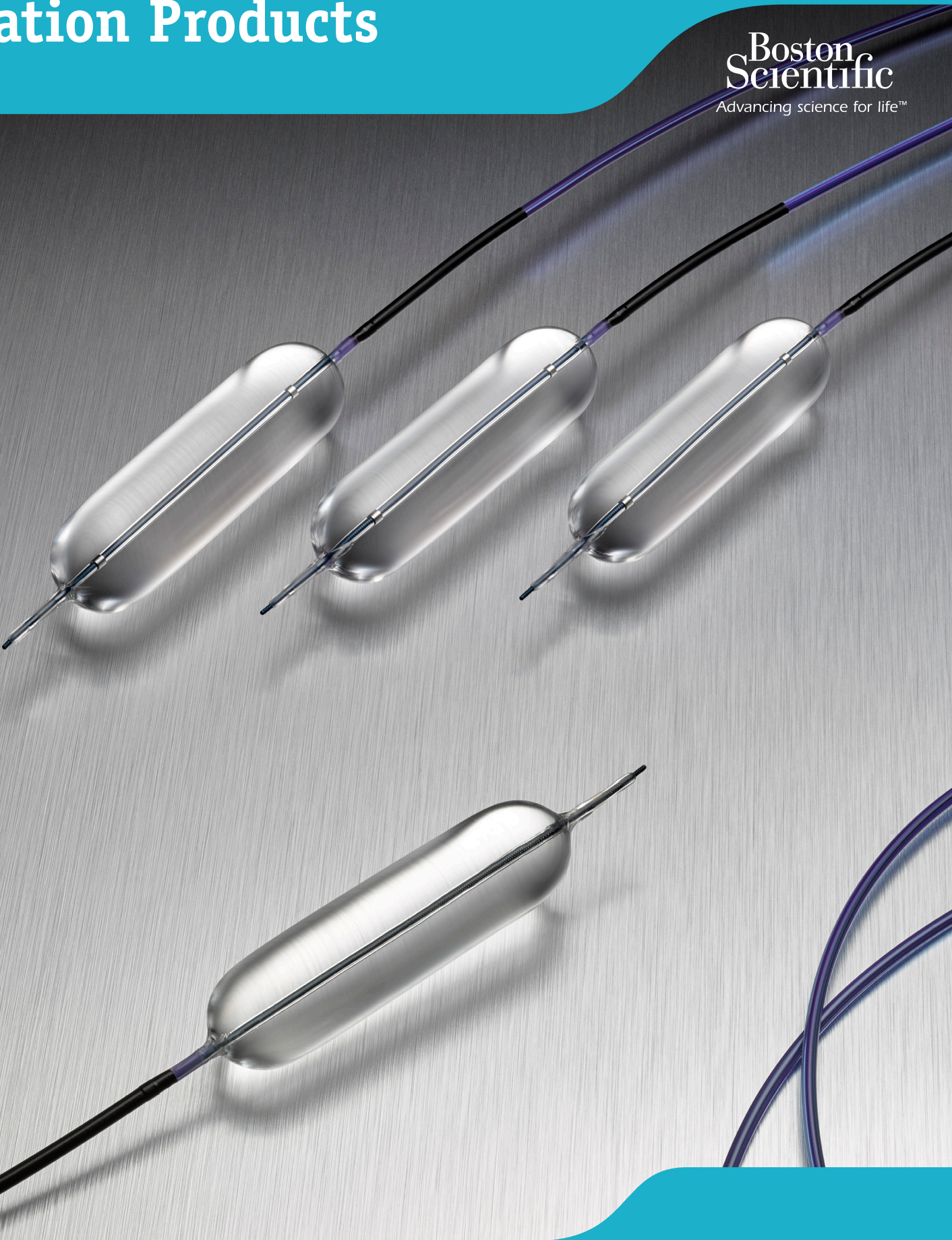


# Dilation Products

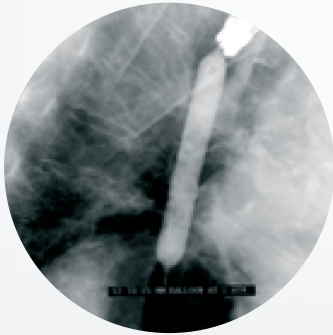
**Boston  
Scientific**  
Advancing science for life™



The Boston Scientific **CRE™ and CRE PRO Wireguided Balloon Dilatation Catheters** were designed to ensure superior performance with **Balloon Endoscopy**, providing exceptional Control, Efficiency and Performance

## Control

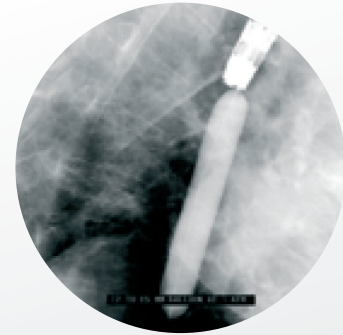
Designed to produce three distinct diameters at three separate pressures during in vivo dilation



**CRE Balloon Dilatation Catheter  
inflated to 12mm**



**CRE Balloon Dilatation Catheter  
inflated to 13.5mm**



**CRE Balloon Dilatation Catheter  
inflated to 15mm**

*Clinical images courtesy of A. Kruse, MD - Aarhus University Hospital, Denmark*

## Efficiency

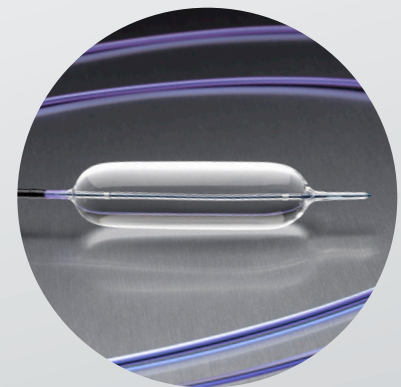
Low profile design for improved passability through the working channel

Facilitates placement within tight strictures and tortuous anatomy\*

*\* Wireguided only*

High pressure balloon is designed to produce little or no balloon waisting

Engineered for rapid deflation

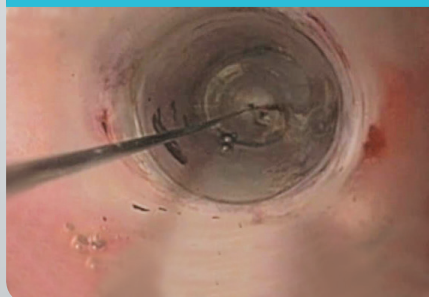


## Performance

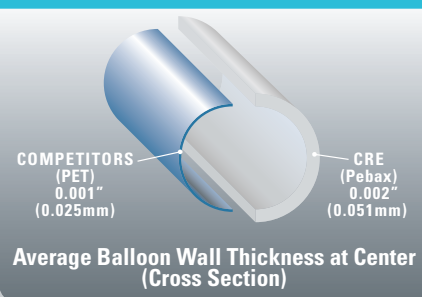
Rounded shoulders designed to facilitate visualization of stricture, or Balloon Endoscopy, while dilating

Proprietary manufacturing process using durable Pebax® material

### THROUGH-THE-BALLOON VIEW OF DILATION AND TISSUE RESPONSE



### MATERIAL + BALLOON WALL THICKNESS = PERFORMANCE



*Sources: Bench test data on file Boston Scientific Corp.*

## CRE™ PRO Wireguided Balloon Dilatation Catheter

The latest addition to Boston Scientific's balloon dilation product line, the CRE PRO Wireguided Balloon Dilatation Catheter is designed to improve passability through the scope with embedded platinum/iridium radiopaque (RO) markers and an automated balloon folding technique.

This was the first balloon dilator indicated for use in the Dilatation Assisted Stone Extraction (DASE) procedure for removal of difficult biliary stones.

“ I was impressed by the CRE PRO Wireguided Balloon Dilatation Catheter. There is improved procedural efficiency due to the ease of passability. Being able to preserve my position saves time and ultimately leads to better patient outcomes. And anytime we reduce procedure time, there is also a cost savings. ”

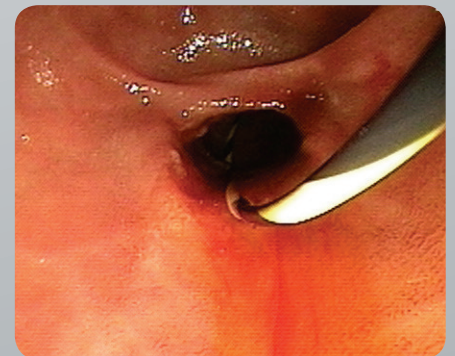
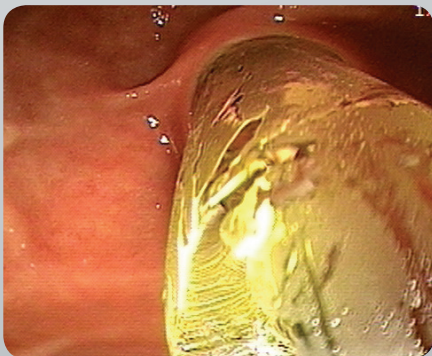
**Jeremy Barber, DO, Mercy Health Muskegon, Muskegon, MI**

“ The DASE procedure with the CRE PRO Wireguided Balloon Dilatation Catheter has significantly changed my approach to the endoscopic removal of large common bile duct stones. It is an easy technique and I have had great success in managing difficult stones. The CRE PRO Wireguided Balloon is easy to place, consistent and reliable for inflation size and pressure. I am very comfortable with this balloon for the DASE application as I've been using it for many years for esophageal and gastric stenosis. ”

**Kenneth Sigman, MD, Birmingham Gastroenterology Associates, Birmingham, AL**

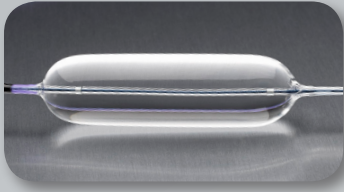
“ The DASE technique using the CRE PRO Wireguided Balloon Dilatation Catheter has changed my practice significantly. Large stone extraction with DASE is easy, procedures are completed faster, and I have achieved a high rate of complete stone clearance. The technique is easy to learn and I have taught some referring physicians who have started doing it successfully. ”

**Riad Azar, MD, Barnes Jewish Hospital, St. Louis, MO**



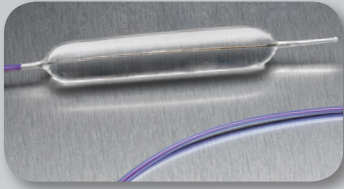
*Clinical images courtesy of Oleh Haluszka, MD - Fox Chase Cancer Center, Philadelphia, Pennsylvania, USA*

# Dilation Products Ordering Information



CRE™ PRO SINGLE-USE WIREGUIDED ESOPHAGEAL/PYLORIC/BILIARY BALLOON DILATATION CATHETERS							
Order Number	Inflated O.D.		Balloon Length (cm)	Inflation Pressured (ATM)	Minimum Working Channel (mm)	Catheter Size (Fr)	Working Length (cm)
	(mm)	(Fr)					
M00558600	6-7-8	18-21-24	5.5	3-6-10	2.8 / 3.2*	7.5	180
M00558610	8-9-10	24-27-30	5.5	3-5-9	2.8 / 3.2*	7.5	180
M00558620	10-11-12	30-33-36	5.5	3-5-8	2.8 / 3.2*	7.5	180
M00558630	12-13.5-15	36-40.5-45	5.5	3-4.5-8	2.8 / 3.2*	7.5	180
M00558640	15-16.5-18	45-49.5-54	5.5	3-4.5-7	2.8 / 3.7*	7.5	180
M00558650**	18-19-20	54-57-60	5.5	3-4.5-6	2.8 / 3.7*	7.5	180

CRE PRO SINGLE-USE WIREGUIDED ESOPHAGEAL/PYLORIC/COLONIC/BILIARY BALLOON DILATATION CATHETERS							
Order Number	Inflated O.D.		Balloon Length (cm)	Inflation Pressured (ATM)	Minimum Working Channel (mm)	Catheter Size (Fr)	Working Length (cm)
	(mm)	(Fr)					
M00558660	6-7-8	18-21-24	5.5	3-6-10	2.8 / 3.2*	7.5	240
M00558670	8-9-10	24-27-30	5.5	3-5-9	2.8 / 3.2*	7.5	240
M00558680	10-11-12	30-33-36	5.5	3-5-8	2.8 / 3.2*	7.5	240
M00558690	12-13.5-15	36-40.5-45	5.5	3-4.5-8	2.8 / 3.2*	7.5	240
M00558700	15-16.5-18	45-49.5-54	5.5	3-4.5-7	2.8 / 3.7*	7.5	240
M00558710***	18-19-20	54-57-60	5.5	3-4.5-6	2.8 / 3.7*	7.5	240



CRE SINGLE-USE WIREGUIDED ESOPHAGEAL / PYLORIC BALLOON DILATORS							
Order Number	Inflated O.D.		Balloon Length (cm)	Inflation Pressured (ATM)	Minimum Working Channel (mm)	Catheter Size (Fr)	Working Length (cm)
	(mm)	(Fr)					
M00558390	6-7-8	18-21-24	5.5	3-6-10	2.8	7.5	180
M00558400	8-9-10	24-27-30	5.5	3-5-9	2.8	7.5	180
M00558410	10-11-12	30-33-36	5.5	3-5-8	2.8	7.5	180
M00558420	12-13.5-15	36-40.5-45	5.5	3-4.5-8	2.8	7.5	180
M00558430	15-16.5-18	45-49.5-54	5.5	3-4.5-7	2.8	7.5	180
M00558440****	18-19-20	54-57-60	5.5	3-4.5-6	2.8	7.5	180

CRE SINGLE-USE WIREGUIDED ESOPHAGEAL/PYLORIC/COLONIC BALLOON DILATORS							
Order Number	Inflated O.D.		Balloon Length (cm)	Inflation Pressured (ATM)	Minimum Working Channel (mm)	Catheter Size (Fr)	Working Length (cm)
	(mm)	(Fr)					
M00558450	6-7-8	18-21-24	5.5	3-6-10	2.8	7.5	240
M00558460	8-9-10	24-27-30	5.5	3-5-9	2.8	7.5	240
M00558470	10-11-12	30-33-36	5.5	3-5-8	2.8	7.5	240
M00558480	12-13.5-15	36-40.5-45	5.5	3-4.5-8	2.8	7.5	240
M00558490	15-16.5-18	45-49.5-54	5.5	3-4.5-7	2.8	7.5	240
M00558500****	18-19-20	54-57-60	5.5	3-4.5-6	2.8	7.5	240

CRE SINGLE-USE FIXED WIRE BALLOON DILATORS							
Order Number	Inflated O.D.		Balloon Length (cm)	Inflation Pressured (ATM)	Minimum Working Channel (mm)	Catheter Size (Fr)	Working Length (cm)
	(mm)	(Fr)					
M00558330	6-7-8	18-21-24	8	3-6-10	2.8	6	180
M00558340	8-9-10	24-27-30	8	3-5-9	2.8	6	180
M00558350	10-11-12	30-33-36	8	3-5-8	2.8	6	180
M00558360	12-13.5-15	36-40.5-45	8	3-4.5-8	2.8	6	180
M00558370	15-16.5-18	45-49.5-54	8	3-4.5-7	2.8	6	180
M00558380	18-19-20	54-57-60	8	3-4.5-6	2.8	6	180
M00558361	12-13.5-15	36-40.5-45	8	3-4.5-8	2.8	6	180
M00558371	15-16.5-18	45-49.5-54	8	3-4.5-7	2.8	6	180
M00558381	18-19-20	54-57-60	8	3-4.5-6	2.8	6	180

Recommended Inflation Device: Alliance™ II Integrated Inflation System Handle Order #5062, Sterile Syringe Order #5060.

Guidewire included and preloaded in balloon catheter.

\* Duodenoscope Channel Size

\*\* Esophageal and Biliary application only

\*\*\* Esophageal, Colonic and Biliary application only

\*\*\*\* Esophageal application only

\*\*\*\*\* Esophageal and Colonic application only

## MAXFORCE™ AND RIGIFLEX™ BALLOON DILATORS ALSO AVAILABLE

MAXFORCE TTS SINGLE-USE ESOPHAGEAL BALLOON DILATORS							
Order Number	Inflated O.D.		Balloon Length (cm)	Inflation Pressured (ATM)	Minimum Working Channel (mm)	Catheter Size (Fr)	Working Length (cm)
	(mm)	(Fr)					
M00589060	6	18	6	10	2.8	6	180
M00589080	8	24	6	10	2.8	6	180
M00589100	10	30	6	7	2.8	6	180
M00589120	12	36	6	7	2.8	6	180
M00589140	14	42	6	7	2.8	6	180
M00589150	15	45	6	5	2.8	6	180
M00589160	16	48	6	5	2.8	6	180
M00589180	18	54	6	5	2.8	6	180

Recommended Inflation Device: Alliance™ II Integrated Inflation System Handle Order #5062, Sterile Syringe Order #5060.

RIGIFLEX II SINGLE-USE ACHALASIA BALLOON DILATORS <sup>†</sup>						
Order Number	Inflated O.D.		Balloon Length (cm)	Catheter Size (Fr)	Working Length (cm)	Recommended Guidewire <sup>‡</sup>
	(mm)	(Fr)				
M00554500	30	90	10	14	90	.038"
M00554510	35	105	10	14	90	.038"
M00554520	40	120	10	14	90	.038"

<sup>†</sup> Product shipped sterile.

<sup>‡</sup> Guidewire included with Rigiflex II Balloon Dilatation Catheter.

Recommended use with Achalasia Pneumatic Hand Pump and Monitor Order #5320

Boston Scientific Corporation  
300 Boston Scientific Way  
Marlborough, MA 01752-1234  
www.bostonscientific.com/gastro

**Ordering Information**  
**1.888.272.1001**

All trademarks are the property of their respective owners.

Indications, Contraindications, Warnings and Instructions for Use can be found in the product labeling supplied with each device.

**CAUTION: Federal (USA) law restricts this device to sale by or on the order of a physician.**

©2015 Boston Scientific Corporation or its affiliates.  
All rights reserved.

ENDO-79803-AC December 2015